



# MMS Action Wizard

This tutorial provides you the information needed to setup an MMS action via the notification wizards.

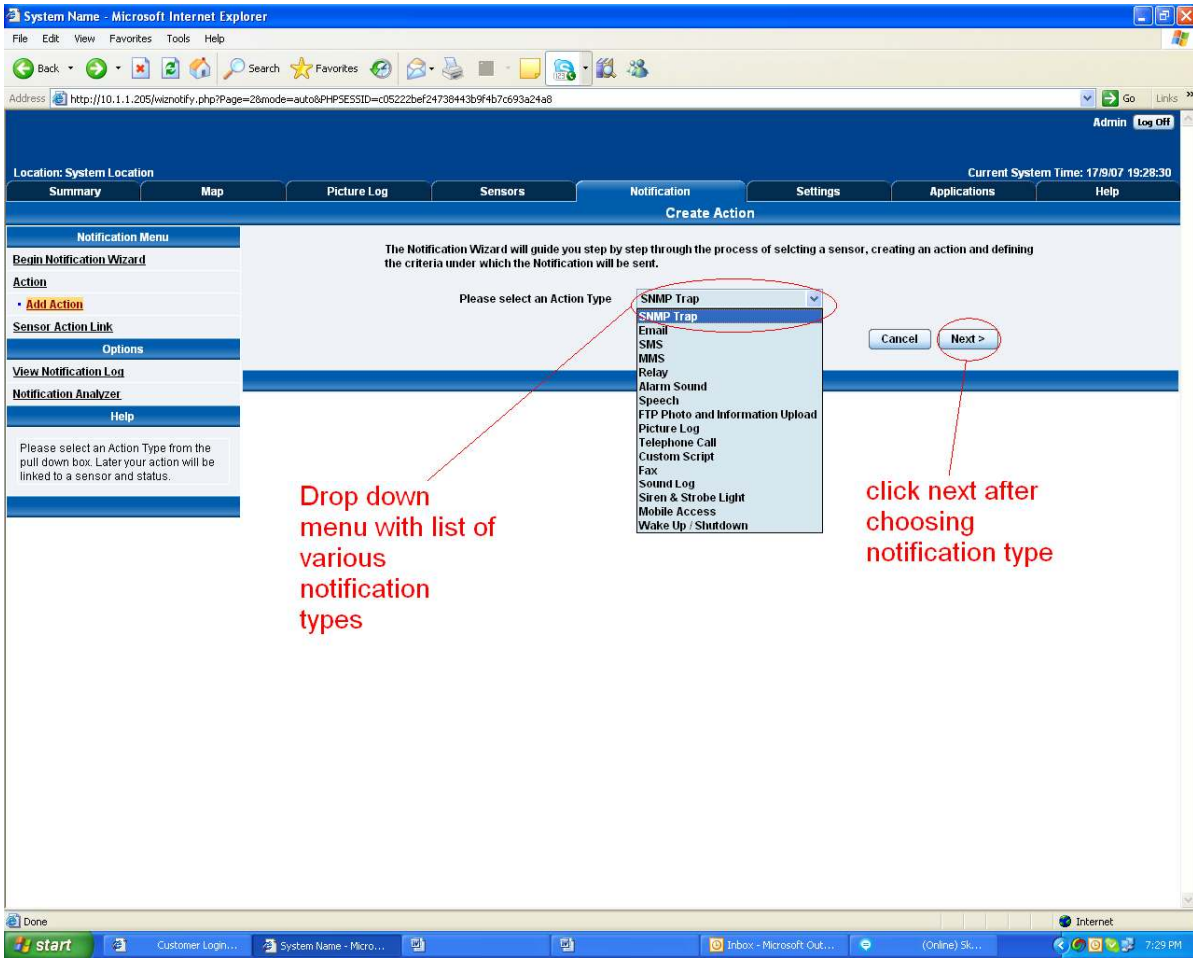
To get to the starting point of this tutorial:

- Log in as administrator
- Click the “Notifications” tab

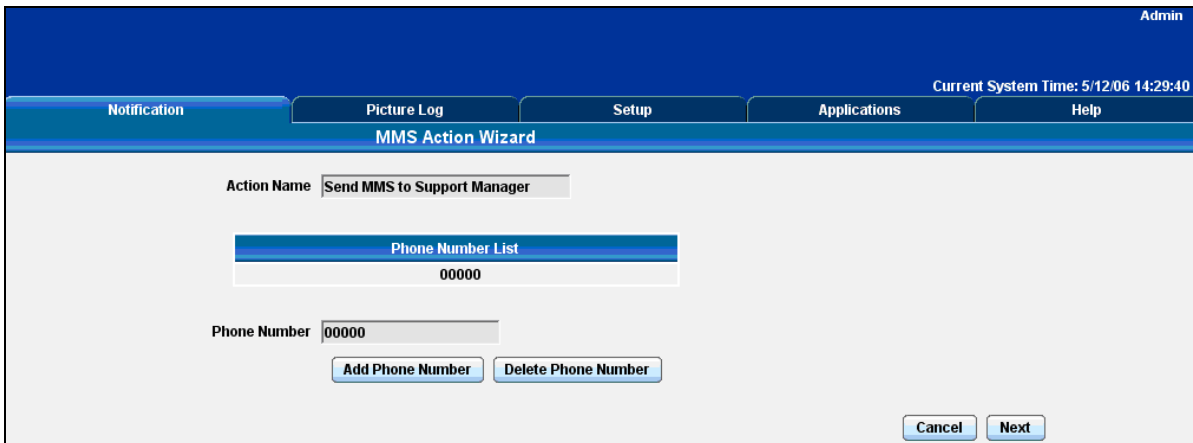
## 1. Adding a notification

a) First click on the “notification wizard”

b) You will now have the notification wizard page displayed, like below.



c) Select MMS from the notification type options.

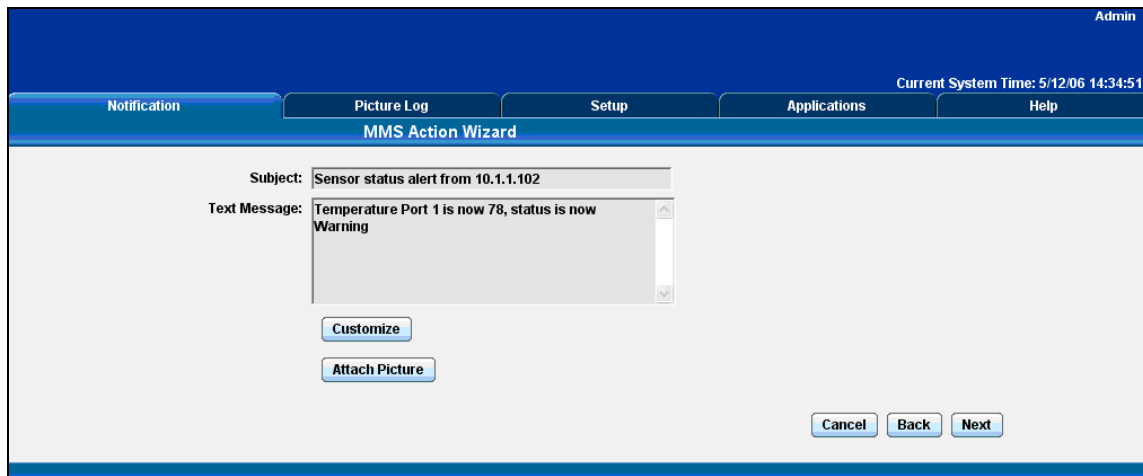


Please choose a name for your MMS Action. Descriptive action names increase the simplicity of the system.

Enter your Destination phone number and Click **Add Phone Number**. You may include multiple phone numbers.

To delete a phone number from the list, select the number and press the **Delete Phone Number** button.

Click **Next** to continue



This is a preview of the message that will be sent to your recipient(s). The message sent will include the details relevant to your sensor.

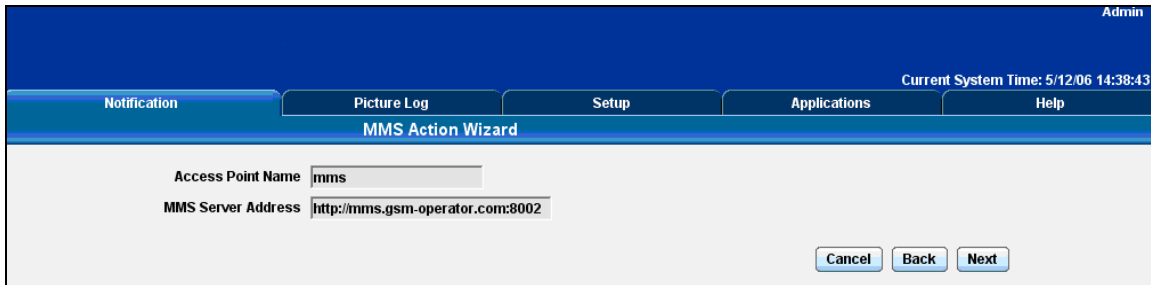
Click **Customize** to edit the macro.

A macro is the piece of text that will return data from the securityHawk. For example `$(TIME)` will take the time from the securityHawk and append it to the email.

The **Macro Description** button gives you details of the data the macro displays. At any point during editing of the macro you can click the preview button to see the changes you have made to the message.

Click **Attach Picture** to attach a Picture with your message. Select to attach either the Current Picture from the Camera or the most recent Picture Stored on the Picture Log. Select which Cameras you would like to use as the source of your picture.

Click **Next** to continue



Admin

Current System Time: 5/12/06 14:38:43

Notification Picture Log Setup Applications Help

MMS Action Wizard

Access Point Name

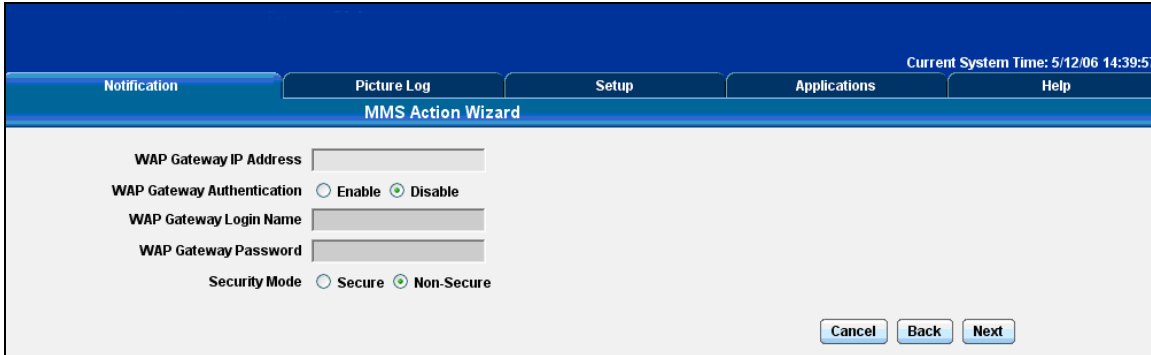
MMS Server Address

Cancel Back Next

Enter the Access Point Name and MMS Centre URL for your MMS provider. These will be provided by your MMS service provider.

If this information has been entered before it will be already completed.

Click **Next** to continue



Current System Time: 5/12/06 14:39:57

Notification Picture Log Setup Applications Help

MMS Action Wizard

WAP Gateway IP Address

WAP Gateway Authentication  Enable  Disable

WAP Gateway Login Name

WAP Gateway Password

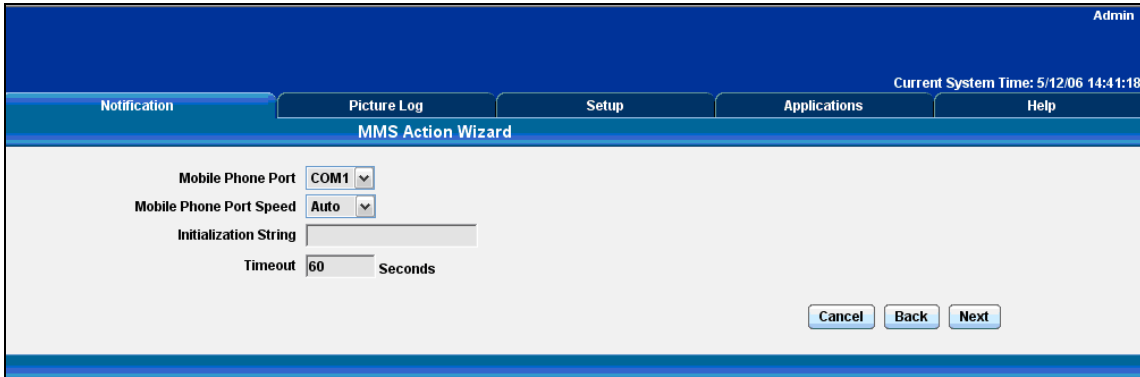
Security Mode  Secure  Non-Secure

Cancel Back Next

Enter your WAP gateway IP address, Authentication settings and Security Mode. These will be provided by your MMS service provider.

If this information has been entered before it will be already completed.

Click **Next** to continue



Admin

Current System Time: 5/12/06 14:41:18

Notification Picture Log Setup Applications Help

MMS Action Wizard

Mobile Phone Port COM1

Mobile Phone Port Speed Auto

Initialization String

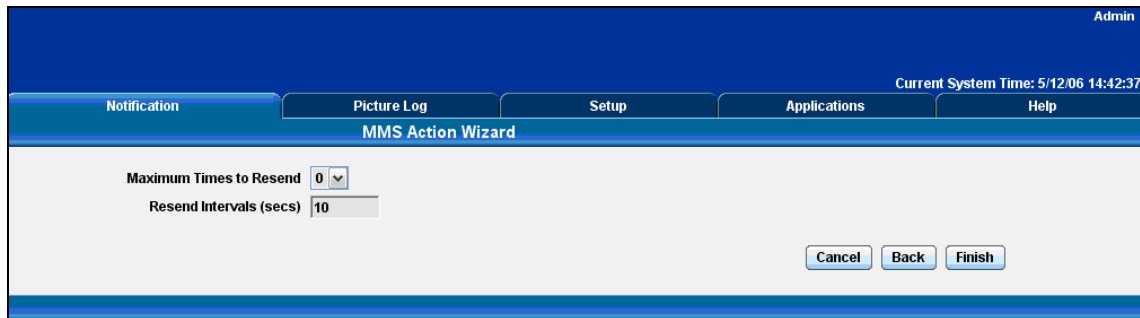
Timeout 60 Seconds

Cancel Back Next

Select the connection method between your phone and computer.

If you do not know your Port Speed, Timeout and Initialization String leave them as Auto and Blank respectively.

Click **Next** to continue



Admin

Current System Time: 5/12/06 14:42:37

Notification Picture Log Setup Applications Help

MMS Action Wizard

Maximum Times to Resend 0

Resend Intervals (secs) 10

Cancel Back Finish

Define the Maximum number of Times to Resend and Resend Interval for the SMS message to be sent to your recipient(s).

Click **Finish** to Save your Action