

SecurityHawk5E

Monitor the physical environment and receive alerts of any disturbances, such as unauthorized intruders, security breaches, high temperatures, smoke, water leakages, power outages and more.

Compatible with all of the Enviromon range of Intelligent Sensors it provides a complete environmental, access control and security monitoring solution.

Introducing the SecurityHawk 5E

The SecurityHawk 5E has a Linux Operating System running an iMX25 CPU. An additional 2 Gigabytes SD card can be installed to provide greater storage capacity. It is TCP / IP compliant and runs lighttpd web server including https (SSL), Bash, Perl, Telnet, PHP, Email and Nagios. The SecurityHawk 5E has an easy-to-use web-based user interface for sensor configuration, data collection and extensive graphing. Complete SNMP functions such including SNMP v3 encryption are supported.



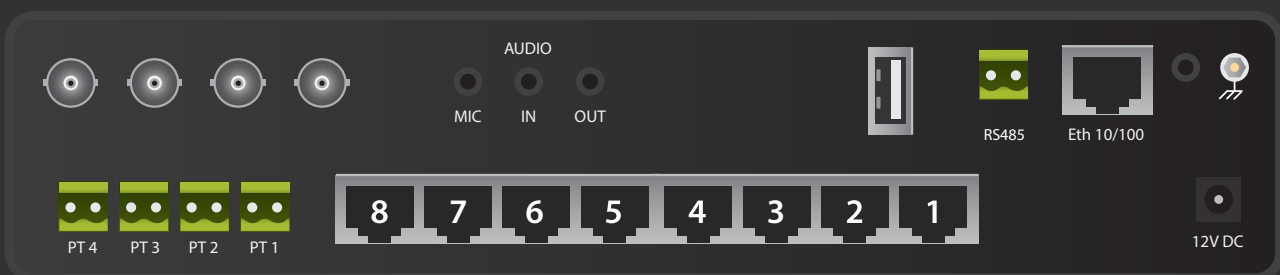
SecurityHawk 5E Monitoring System

The SecurityHawk 5E also supports Modbus Master/Slave, Modbus RTU and Modbus over TCP / IP creating a unique, easy to configure Modbus to SNMP gateway. The web-based interface is written in PHP allowing end-user changes such as language translation. The SecurityHawk 5E has a battery backed time of day clock for accurate record keeping.

SecurityHawk 5E's OnBoard Architecture

Up to 8 of Enviromon's Intelligent Sensors can be connected to the SecurityHawk 5E. When plugged in, sensors automatically configure themselves and go 'online'. Using the 8-Port Expansion Chassis up to 500 sensors can be connected to a single base unit. Our easy-to-use port numbering system allows you to setup the SecurityHawk 5E within minutes.

- i.MX25 Processor
- 128 Megabytes of Onboard NAND Flash
- Onboard SD card slot
- 10/100 Mbps Ethernet Port
- 1x USB 2.0 Port
- 4x BNC Video Ports
- RS485 Ports
- Internal Audio Speaker
- Internal Microphone
- 8 Full AutoSense RJ-45 Ports
- 2x RJ-45 Expansion Ports
- Video Enabled

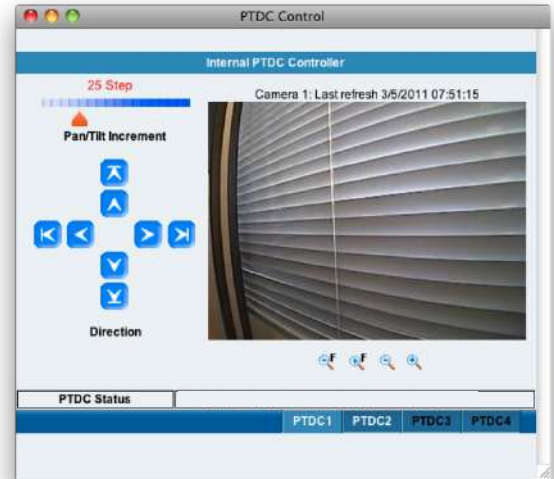


Applications

Connect up to 4 External Cameras

The SecurityHawk 5E can display pictures from a maximum of four cameras simultaneously in several sizes, up to 640x480 pixels resolution.

SecurityHawk cameras are used in professional surveillance and CCTV monitoring systems. A built-in pan-tilt controller interface allows complete control of pan and tilt cameras using the industry standard Pelco D bus.

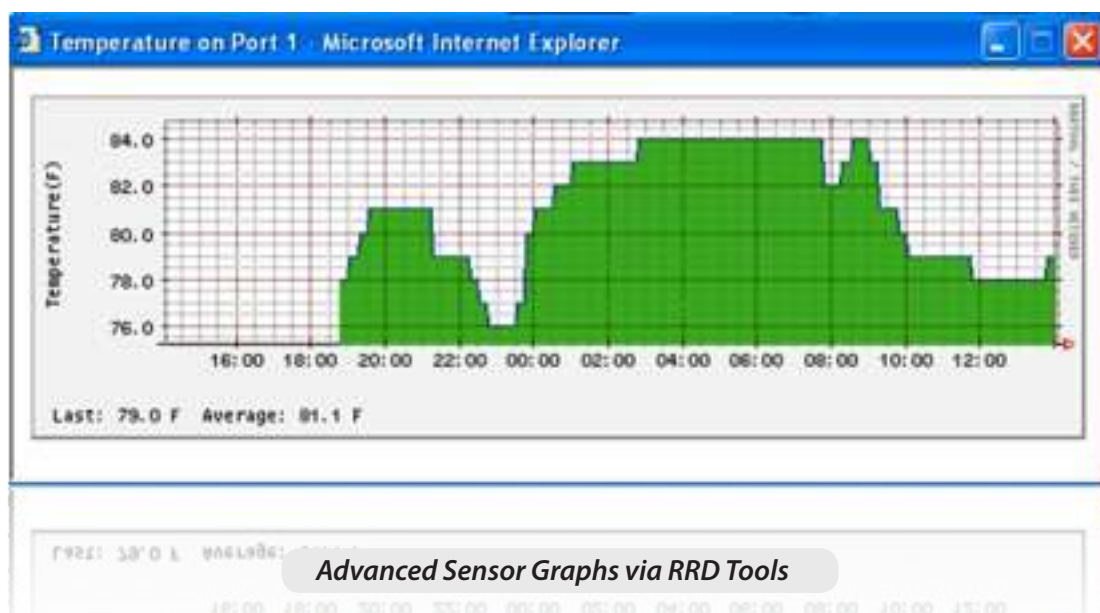


External Camera PTDC Control

Sensor Graphing

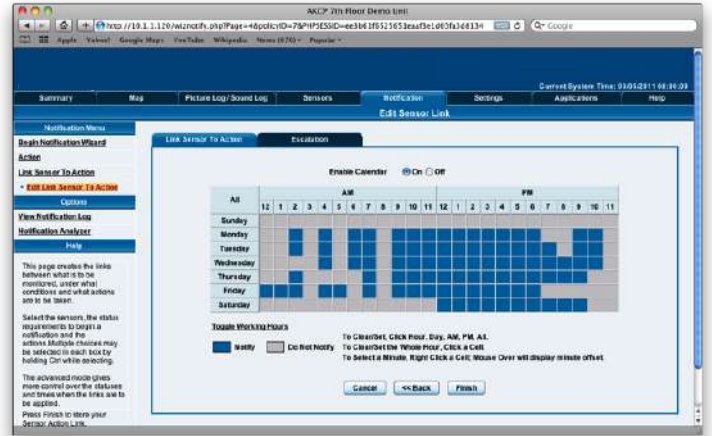
The SecurityHawk 5E integrates and displays graphs of all sensor data in its web-based user interface. The individual graph (day, week, month and year) for each sensor type can be customized, simply by modifying the script template used to generate a particular graph. RRD tool is used to build an embedded database of sensor data.

This data can be accessed from the web interface, or downloaded to a remote PC. MRTG can be used to generate real-time graphs of sensor data on a remote website.



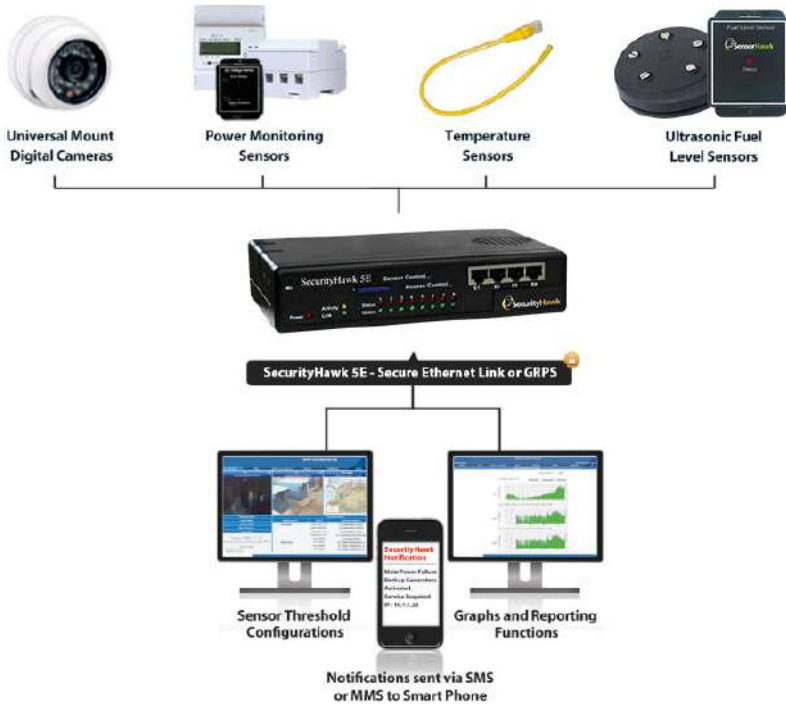
False Message Filter

In order to prevent false alarms, the SEC 5E allows extensive filtering of events. You can limit events based on the time of day or the day of the week. You can also limit the number of alerts per hour, so that you are not swamped with many messages. This is especially important with the sensor like the motion detector where you may want to process an event only when the business premises are closed.



False Message Filters via Calendar Setups

Sensor Integration & Notification System



SecurityHawk 5E Example Notification

Up to 8 intelligent sensors can be connected to the SecurityHawk 5E.

When plugged in, each sensor automatically configures itself and goes online. Using the either the 8-Port Expansion Chassis, up to 500 sensors can be connected to a

interface allows you to setup the SecurityHawk 5E within minutes.

When online, the sensors use 4 levels of threshold checking and report any status change.

Notifications and alarms can be dependent on the states of multiple sensors, and can be configured to escalate in severity over time. The notification system can alert

you of a problem via email, SMS messages and telephone calls, (additional hardware required), or send a message to any commercial network monitoring system using SNMP traps. The SecurityHawk 5E can automatically switch a relay on or off, wake-up or shutdown a remote server, send pictures and data via FTP, send a FAX, run your custom script and many more versatile functions.

The SecurityHawk 5E can automatically push out the complete status of the unit and sensors via the Heartbeat Message feature. This can be setup to be sent through e-mail, SMS or SNMP traps. A HTTP get script can also be chosen, allowing the data to be pushed to web servers.

Industry Certifications & Network Management Systems

SensorHawk & SecurityHawk offers NMS Integration for leading network management systems such as:



- Netmon
- AdRem NetCrunch
- IBM Tivoli
- Quest Software – Big Brother
- Lorient Pro
- Somis WebNM and Denika
- Castle Rock
- Logalot
- WhatsUp Gold
- HP OpenView
- MRTG
- Computer Associates Unicenter TNG

Support and Warranty

- **Lifetime Global Warranty**
- **Unlimited Lifetime Support.**
- **Free Firmware Updates.**
- **Full, Easy to Follow Documentation.**



SecurityHawk 5E Features List

- Embedded web server displays sensor information and live video from connected cameras.
- Control 4 PTZ cameras directly from the web interface.
- Record digital video to remote servers or internal memory, or send live images to your own website.
- Connect up to 4 Universal Mount Digital Cameras, and simultaneously display images up to 640x480px resolution.
- Receive notifications of anomalous events via email, SMS / MMS, SNMP traps, and many more.
- Integrates with network management systems via SNMPv1 and Encrypted SNMPv3.
- Stream video and sensor information directly to your cellphone or PDA.
- Ability to connect external GPRS / GSM modem, Bluetooth and WiFi USB adapters.
- Uses Linux operating system for maximum stability and flexibility.
- Virtual Sensors monitor power, Modbus, network devices, and other SNMP based equipment.
- Built-in graphing and data logging, internally or to a remote PC.
- Platform independent; free firmware upgrades and utilities.
- Monitor up to 500 intelligent sensors using expansion modules (E-Opto 16 and E-Sensor 8)
- Compatible with complete range of Intelligent Sensors
- Full Modbus support : Modbus Master / Slave, Modbus RTU, Modbus over TCP / IP

Technical Specifications

<p>Dimension</p> <p>Size : 8.5" x 5.43" x 1.80" Weight : 2.4 Pounds</p>	<p>Expansion Ports</p> <p>2x RJ-45 Expansion Ports 115.2K BPS Data Transfer Rate Simultaneous Functionality between Expansion Ports & RS485 Port Threshold Status</p>	<p>Mounting</p> <p>Rack Mount Brackets included Compatible with Rack Mount Trays</p>
<p>Power Requirements</p> <p>Voltage : 7.0 - 9.0 VDC, 3Amp</p>	<p>Status Indication</p> <p>LED Indication for Power LED for Network Connectivity LED for Sensor Online and Threshold Status</p>	<p>Output</p> <p>Ext. Speaker Out, 2.5" Jack (Analog) For Modem Application</p>
<p>Power Consumption</p> <p>Typical 3.375 Watt, 0.45A</p>	<p>Operating Environment</p> <p>Temp : Min -35°C - Max +55°C Humidity : Min 20% - Max 80% (Non-Condensing)</p>	<p>Components</p> <p>Manufactured using highly integrated, low power surface mount technology to ensure long term reliability.</p> <p>iMX25 Processor 128 MB NAND Flash Internal On-Board SD Memory Slot Drive</p>
<p>Inputs</p> <p>8x RJ-45 Sensor Ports 4x RJ-45 Expansion Ports 4x BNC Video Ports V1-4 1x USB Port (Version 2.0) 4x PTZ Two Pin Controllers Audio In (Analog) 2.5" Jack RS485, 2 Pin Terminal Box (Used for MODBUS)</p>	<p>MTBF</p> <p>400,000 Hours</p>	<p>Expansion Boards</p> <p>8-Port Expansion Chassis Extendable up to 1,000 Feet or 300 Meters Expansion modules are daisy chainable.</p>