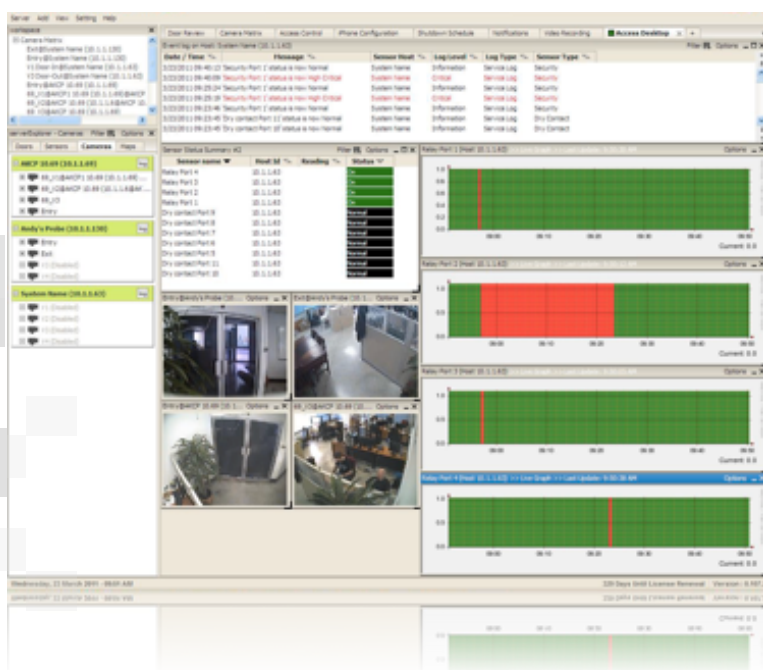


Rope Liquid Detection Sensor - 10' enviromon.net



Rope Liquid Detection Sensor - 10'

The SensorHawk Rope Liquid Detection Sensor is a rope type water detector designed for efficient water detection monitoring.

The Rope Liquid Detection Sensor can be connected to any one of the SensorHawk or SecurityHawk's RJ-45 Intelligent Sensor ports enabling the unit to detect the presence or non-presence of water.

This water sensor is a switch type that will be on or off and will detect the presence of water if any portion of the rope becomes wet.

This sensor comes fully assembled including the water sensing rope, the non-sensing cable that connects the rope to the sensing module and the main sensing module that connects via CAT5 LAN cable to the SensorHawk or SecurityHawk base units.

Rope Liquid Detection Sensor -10' **enviromon net**

The sensing rope cable can be pre-ordered from a 10 foot minimum to any custom run length of up to 165 feet or 50 meters . The non-sensing cable comes in a standard 20 foot run length.

The sensing module is then connected to any of the RJ-45 Intelligent sensor ports on the SensorHawk or SecurityHawk base units using standard CAT5/6 LAN cable.

The presence, or non-presence of water can be used to trigger alerts like e-mail, SMS, phone calls and SNMP traps. The sensor has its own SNMP OID so that it can be monitored over your network using any Network Management System.

Each Rope Liquid Detection Sensor comes complete with a 5 foot sensor cable that connects the main sensing module to either the SensorHawk or SecurityHawk's RJ-45 sensor ports, or you can use your own CAT5e/6 LAN cable. This cable can be extended up to 100 feet or 30 meters.

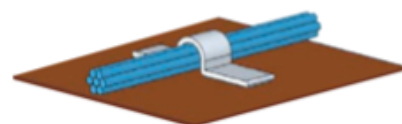
Water

Ideal for use in basements and under false floors and roof spaces, the Rope Liquid Detection Sensor can cover a large area. Combined with any of the SensorHawk series or SecurityHawk series units it will give you advance notice of any water leaks or flooding. The sensor will retain its error condition until it is read via an SNMP get. Therefore if the sensor encounters a critical condition at anytime it will report that condition before it returns to a normal state.

Rope Liquid Detection Sensor -10' **enviromon net**

Mounting the Rope Liquid Detection Sensor

We recommend using any standard plastic U-clip with the adhesive base as shown. These types of clips can normally be found at your local hardware store. When installing or handling your new rope sensor, please be sure to handle the rope portion of the sensor with care, avoiding any twisting, excessive bending or putting stress on the rope, as the internal sensing wires are very delicate and can become damaged quite easily.



U-Clip with Adhesive Base

Main Features

- **Powered by the SensorHawk, or SecurityHawk base units. No additional power needed.**
- **Both units will auto-detect the presence of the Rope Liquid Detection Sensor.**
- **Full autosense**
- **Sensor module LED activates when liquid is detected by the sensor.**
- **Sensor reports critical status if cable integrity is broken, cut, or unplugged.**

Technical Specifications

Measurement Range : Wet or Dry (-20 degrees C- +60 degrees C)

Measurement Accuracy: able to detect the presence or non-presence of water.

Sensor Type: patent pending, capacitance measurement technology

Power Consumption : Typical 125 mWatt, 25 mA

Communications Cable : RJ-45 jack to main sensor module using UTP CAT5 cable.

Maximum extension cable run length is 30 meters (100 feet).

Comes fully assembled including the Water sensing rope, the non-sensing cable that connects the rope to the sensing module and the main sensing module that connects via CAT5 LAN cable to the SensorHawk / SecurityHawk base unit.

Sensing rope cable can be pre-ordered from a 10 foot minimum to any custom run length of up to 165 feet or 50 meters.

Non-sensing cable comes in a standard 20 foot run length.

Sensor OID is .1.3.6.1.4.1.3854.1.2.2.1.18.1.3.0

Note: Enviromon does not recommend the ropeWater Sensor to be placed on a conductive surface.